



The NEW design offers a more effective and time-saving approach to testing.

TK2024

HYDRAULIC ELECTRONIC UNIT INJECTOR TESTER

Automatic High Pressure Setting

New Hydraulic System sets pressure automatically, the setting continues without

Much Faster Testing

New control application and automatic high pressure testing eliminates the need for an operator to stand and observe testing.

HEUI injectors are now tested just like Common Rail Injectors, uninterrupted till the end of the test.

Higher Pressure....

New Hydraulic System is capable to provide 300 Bar Test Oil Pressure at max 4 L / min flow rate.

Standard Test Oil...

Use ISO4113 to test HEUI injectors with precision.

Application Kits

Ford Powerstroke 4.5L V6, 6.0L V8, 7.3L V8

Navistar DT444E 7.3L

Navistar DT446E 7.6L

Navistar DT530E 8.7L

Navistar DT570 & HT570 9.3L

Navistar VT275 4.5L

Isuzu Trooper 4JX1 3.1L

Caterpillar 3408 18.0L

Caterpillar 3412 27.0L

Caterpillar 3116E 6.6L

Caterpillar 3126A 7.2L

Caterpillar 3126B 7.2L

Caterpillar C7 7.2L

Caterpillar C9 8.8

1

PD FlowMeter for more accuracy and repeatability

The new metering system responds in less than 3 seconds, allowing for fast testing.

It has a resolution of 0.3 mm³ with 0.5% accuracy.



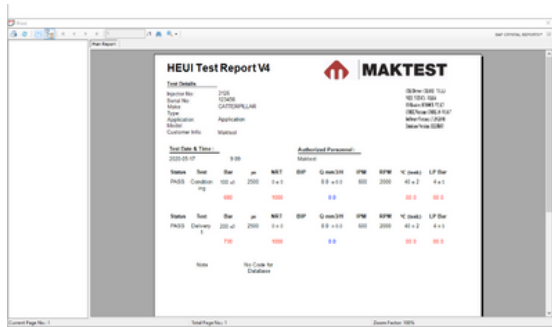


Automatic High Pressure Control

2

Temperature Control with Intelligent Pump Control

New Control Application controls the pump speed according to flow demand to minimize the return of high temperature flow to the tank. As a result TK2024 has heating demand more than cooling demand.



Test Report as PDF File

4

Test Oil Transfer System Module

High Pressure Circuit Specs

Common Rail HP Pump with High Flow
Max Pressure 300 bar
Automatic High Pressure Control

Low Pressure Circuit Specs

LP Pump Electric Pump, 4 L/min
Max Pressure 6 bar
LP Regulator Manual

3

New Control Application and Test Plan Editing Features Module

New Application allows the user to create new test plans based on the Generic Test plans. The user can also modify Signal parameters that allows to create different test modes to detect various problems of HEUI Injectors. Important Test Parameters to understand the assembly conditions of HEUI Injectors:

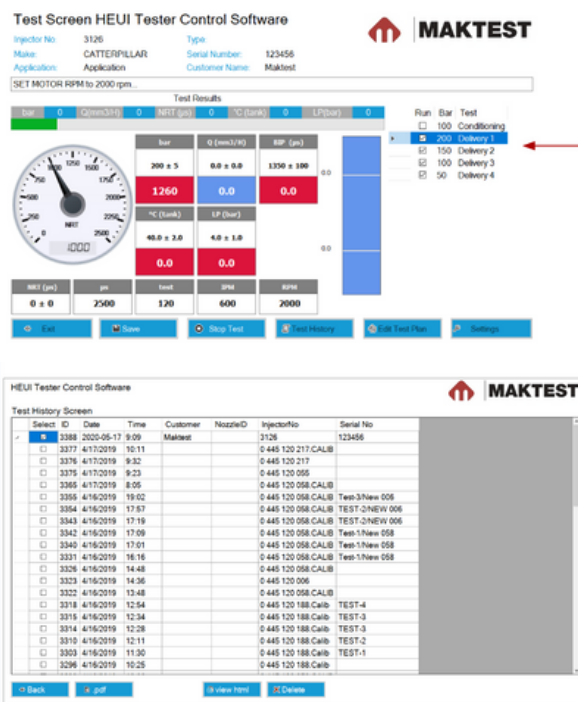
BIP; Beginning of Injection Period; namely the time delay until the injector solenoid activation to start the injection cycle,

NRT; Nozzle Response Time; namely the time delay until the delivery of fuel from the nozzle. Both of these parameters play important role in determining the performance of the injector on the engine, eliminating all timing related problems when assembled on the engine.

5

Instrumentation

High Pressure : 0-300 bar;
Digital Low Pressure . 0-6 bar;
Digital Flow Gear Type; 0 - 200 mm³/Stroke;
Digital Temperature 10- 160 °C; Digital



6

Machine Dimensions:

Width: 930 mm
Depth: 650 mm
Height: 1690 mm
Weight: 270 kg

7

Packing Dimensions:

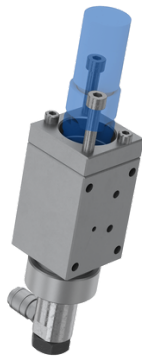
Width: 1090 mm
Depth: 860 mm
Height: 1890 mm
Weight: 360 kg

Optional Accessories for Various HEUI

KO4600 CATERPILLAR C7-C9 HEUI ASSEMBLY TOOL SET FOR KO4000
KO1873 CATERPILLAR C7-C9 REPAIR TOOL SET
KO1391 CATERPILLAR 3126 SLEEVE ADP.(SHORT AND LONG)
KO1392 ISUZU TROOPER/HOLDEN JAKAROO SLEEVE ADAPTOR
KO1393 CATERPILLAR C7 ENGINE INJECTOR SLEEVE ADAPTOR
KO1394 CATERPILLAR 3408-3412
KO1396 CATERPILLAR C9 ENGINE INJECTOR SLEEVE ADAPTOR
KO1397 INJECTESTER HEUI FORD 6,0-7,2 LT POWER STROK SIEMENS - HEUI ADAP.
KO1398 CAT 3116 - E (106 - 7056 AZ OR4970) SIDE SOLENOID - SHORT
KO1399 SIEMENS NAVISTAR-DT570 1848492C91
KO1756 HEUI Poppet Valve Test Module (including MO1161 adaptor sleeve)
MO1161 Assembly Sleeve for Cat 3126 (INCLUDED IN KO1756)
MO1162 Assembly Sleeve for Cat 4jxl - TC
MO1163 Assembly Sleeve for Cat 3408E - 3412E
MO1164 Assembly Sleeve for Cat C7 - C9



KO1391



KO1393



KO1756



MO1162