

# UTS1004

## ELECTRONIC UNIT INJECTOR AND UNIT PUMP TEST BENCH

UTS1004 is the only  
test equipment to test  
**QSK HPI injectors**  
with precision  
timing controls.



# What else does Maktest provide?

- Up-to-date information on testing and repair instructions.

- The latest version control software and drivers.

- Repair manuals for repairing various unit injectors and unit pumps.

- User manuals and troubleshooting guides.



# FEATURES & BENEFITS

## ADJUSTABLE CAM STROKE

Adjustable Cam Stroke provides testing being as close to as standard working conditions of the injector. Internal pressure level maintains same as when running on the engine, creating a similar condition like in the engine and allowing the delivery to be compatible to the engine conditions.

UTS 1004 patented Cam Box design, allows to set the cam stroke without:

- draining oil,
- removing cam
- adjusting timing

It only takes turning a knob a few times to set the cam stroke.



## Wide Application Range; from Caterpillar to Continental VDO

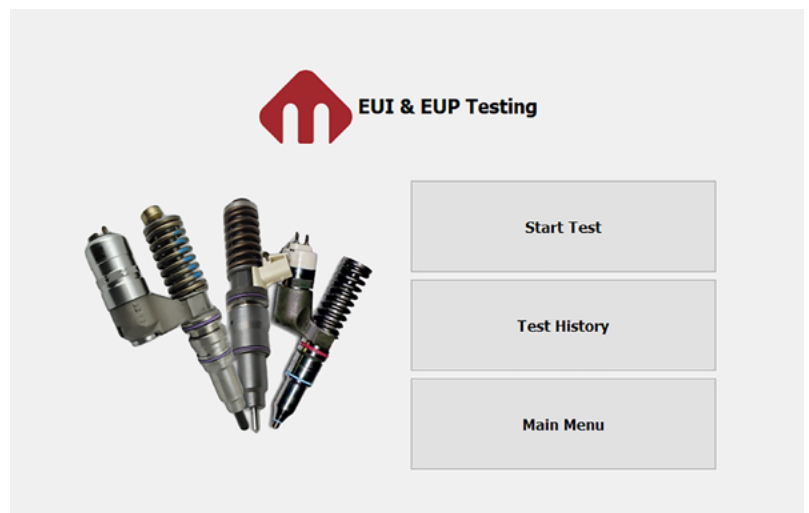
UTS1004 has the technical infrastructure to test

- Caterpillar EUI: 3406E; zC15; C10;C11;C12;C13;C18; 3116 MEUI, 3500 MEUI; 3500E.
- Cummins: Celect N14/M11/M11+; HPI (ISX and QSK); K-STC;
- Bosch EUI/EUP all types.
- Delphi: A0; A3; E1; E3; F2P
- Detroit Diesel: all types.
- Continental VDO all types.

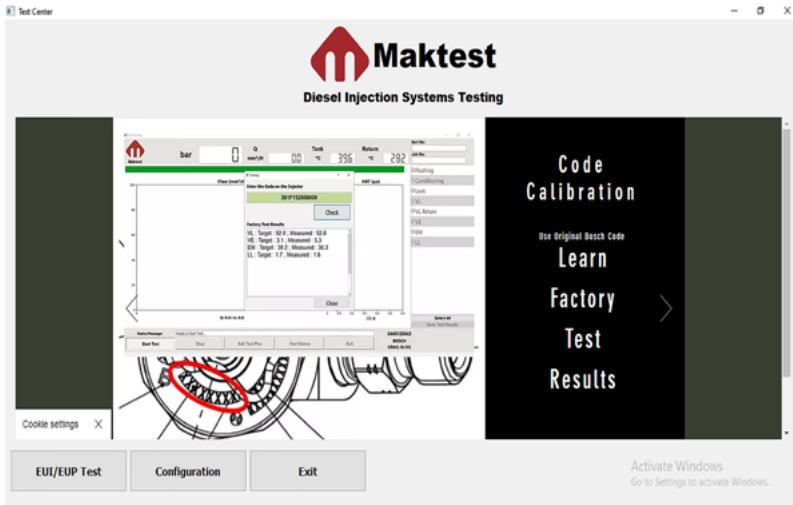
Patented Cam Box; stroke set between 10 & 18 mm.

## SRT MEASUREMENT

UTS1004 is capable to measure the Solenoid Response Time. SRT value determines the condition of the solenoid, assembly of the control valve with the spring tension and valve stroke. SRT value determines the timing of the delivery and thus relates to many problems such as smoke at acceleration and idling problems.

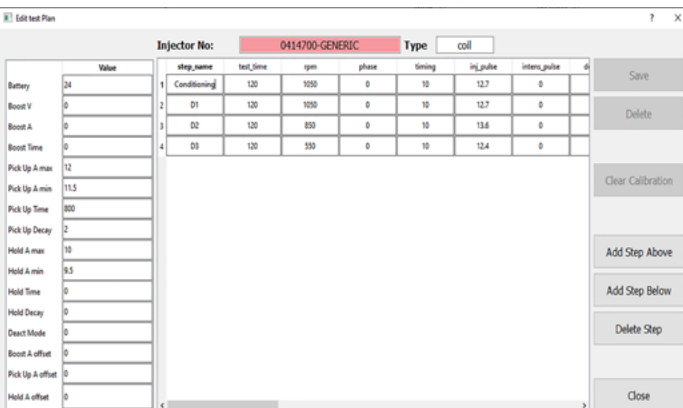
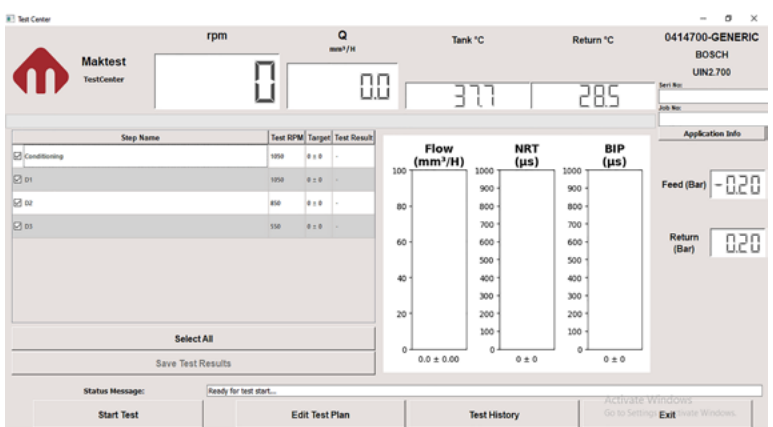
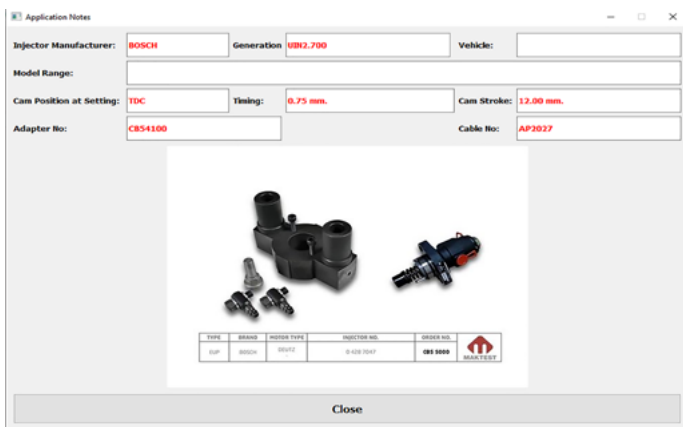
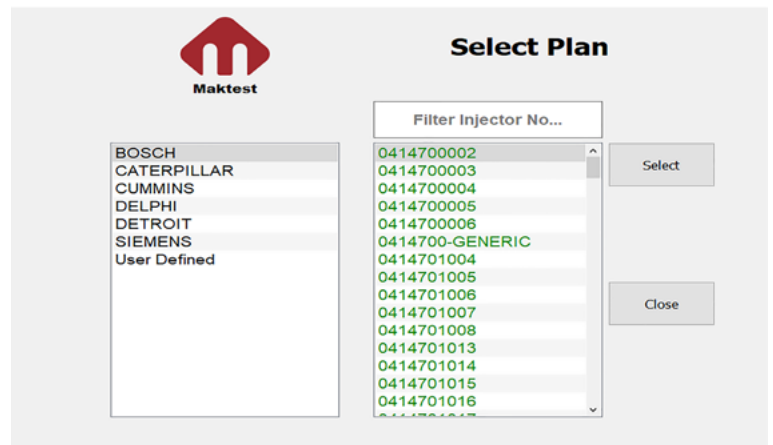
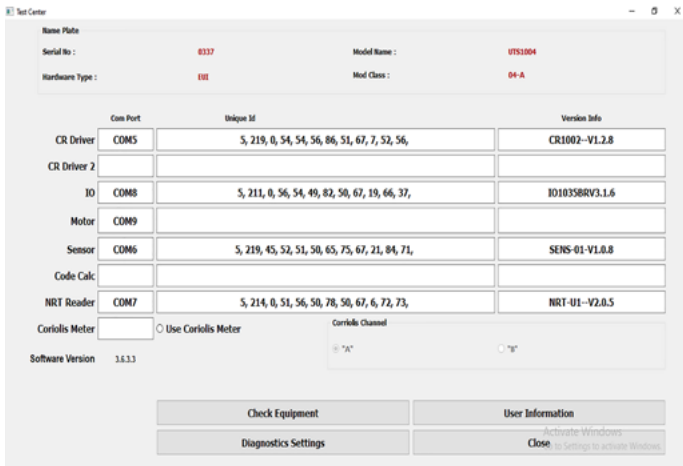


# EASY USER INTERFACE WITH TEST PLAN CREATE AND CALIBRATE FUNCTION



UTS1004 user interface provides all the necessary data on the test screen readily available for the user to decide the condition of the injector. The software allows the use to create different test plans.

Software help user to keep the test plan target values calibrated with its automatic calibration feature.




# EASY USER INTERFACE WITH TEST PLAN CREATE AND CELIBRATE FUNCTION

Injector No: 0414700-GENERIC Type: coil

Value	bip_tol	fw_time	return_p_target	return_p_tol	test_type	tank_temp	tank_temp_tol	ref
Battery: 24	101	0	2	0.5	C	40	2	
Boost V: 0	100	0	2	0.5	D	40	2	
Boost A: 0	101	0	2	0.5	D	40	2	
Boost Time: 0	101	0	2	0.5	D	40	2	

Buttons: Save, Delete, Clear Calibration, Add Step Above, Add Step Below, Delete Step, Close



## Select Test Report

Filter Date... Filter Injector No...

Filter Date...	Filter Injector No...	Report	Action
2022, 03/06	0414720216	1 @ 08:21:38	Select
2022, 02/06	0414799008	2 @ 08:37:04	
2022, 01/06	CELECT	3 @ 08:47:56	
	CELECT-GENERIC	4 @ 09:17:05	
	HPI	5 @ 10:30:32	
	HPI-GENERIC		Close
	SIEMENS-GENERIC		



### EUI Test Results

Company Name:  
Address:  
Tel No:  
Equipment Id: 0337

Email:

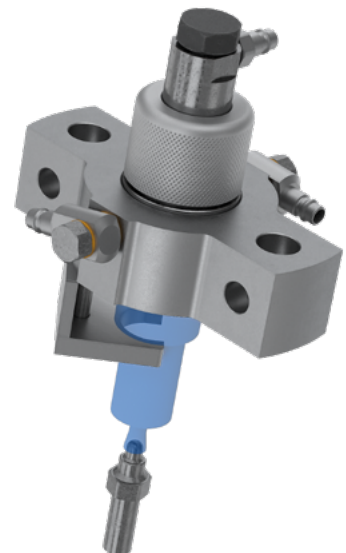
Job No	Injector No	Serial No	Test Time
202263	0414720216	1	06/03/22_08:21:38

Step	Rpm	Feed (bar)	Target	Q(mm³/H)	Tank°C	NRT	BIP	Pass/Fail
Conditioning	1119	4.4	0.0 ± 0.0	28.9	29.8	0	0	Pass
D1	1200	4.3	0.0 ± 0.0	44.5	30.5	1273	1150	Pass
D2	950	4.3	0.0 ± 0.0	42.6	32.9	0	1148	Pass
D3	500	4.3	0.0 ± 0.0	20.6	35.0	0	1148	Pass
D4	350	4.3	0.0 ± 0.0	10.5	36.0	0	1148	Pass

# Optional Accessories for Various EUI / EUP

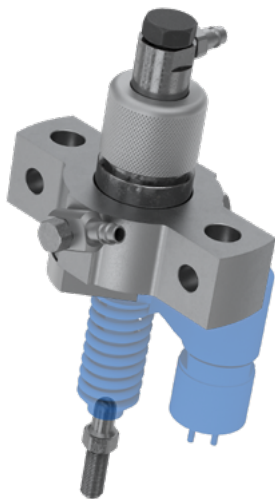
CB50400 DELPHI A3 TYPE @ VOLVO  
 CB50500 BOSCH VW-AUDI-SEAT SKODA  
 CB50600 BOSCH MERCEDES ACTROS TRAVEGO / EUP  
 CB50700 BOSCH MERCEDES AXOR / EUP  
 CB50800 VOLVO-BOSCH (8113408)  
 CB50900 BOSCH IVECO  
 CB51100 DELPHI LUCAS LAND ROVER - 17491CS  
 CB51300 CATERPILLAR 3500 (EUI 1320202-108528)  
 CB51400 BOSCH SCANIA  
 CB51500 CATERPILLAR 3116 (1071232-220264-1278209-727515)  
 CB51600 CATERPILLAR 2113025-2235320  
 CB51700 MARIN MECHANICAL INJECTOR (BR55510 100)  
 CB51900 DETROIT DIESEL SERIES 60  
 CB52000 CUMMINS MECHANICAL INJECTOR MS 3084398-3028066  
 CB52100 CATERPILLAR C10 (1660155-437290AU)  
 CB52200 BOSCH DAF-RENAULT /EUP  
 CB52300 BOSCH DEUTZ  
 CB52400 SIEMENS PPD 131021 / 1121013  
 CB52500 BOSCH VW-AUDI-SEAT-SKODA NEW TYPE  
 CB52600 DELPHI E3 & E1 TYPE @ VOLVO/RENAULT WITH 2 CABLES  
 CB52700 CUMMINS CELECT N14  
 CB52800 CUMMINS MECHANICAL INJECTOR NTA855  
 CB52900 DELPHI A3 TYPE @ HYUNDAI TRUCKS  
 CB53000 BOSCH VOLVO HEAVY DUTY WORK MACHINE /EUP  
 CB53100 ADAPTOR FOR SIEMENS VOLKSWAGEN  
 CB53200 BOSCH NISSAN (9 443 613 182)  
 CB53300 CUMMINS CELECT M11 - M11+ - ISM  
 CB53400 DELPHI UNIT PUMP FOR DAF (092330311 1668325 LKFK)  
 CB53600 LUCAS ( KCCOT120A0020)  
 CB53700 VOLVO HEAVY DUTY ( 0414 750 003)  
 CB53800 BOSCH IVECO PDE 100S4003 (0414 703 004 - 010)

CB5 1100 Adapter for Delphi Unit Injector  
 for Land Rover TD5 Adapter for Delphi Unit  
 injector for Land Rover TD5. BEBE2A01001. 




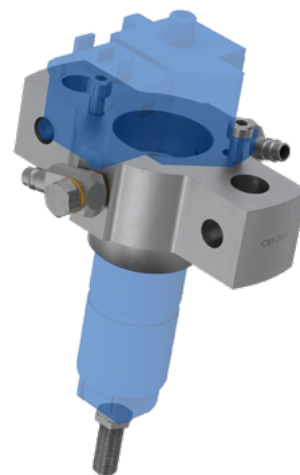
# Optional Accessories for Various EUI / EUP

CB53900 BOSCH (0414 693 003)  
 CB54000 DELPHI John Deere Tractor  
 CB54100 BOSCH IVECO (0414 700 003)  
 CB54200 BOSCH 0986 411 029  
 CB54300 BOSCH 0412 010 594  
 CB54500 CATERPILLAR 3500 (MUI)  
 CB54600 CATERPILLAR 2490713  
 CB54700 LUCAS John Deere  
 CB54800 UNIT PUMP BOSH-DEUTZ (0414 491 107)  
 CB54900 VOLVO-BOSCH (0986 441 004-0414 701 004)  
 CB55000 DEUTZ PUMP (0428 7047)  
 CB55100 CUMMINS - QSK (4088428)  
 CB55300 CUMMINS MECHANICAL INJECTOR @ ISX (1521978-1464976)  
 CB55500 DETROIT DIESEL DD15 DELPHI E3 INJECTOR ADAPTER SET  
 CB55600 DETROIT DIESEL MUI (53/71/93) ADAPTER SET  
 CB55700 DETROIT DIESEL SERIES 149 EUI ADAPTER SET  
 CB55800 DETROIT DIESEL 8 MM EUI ADAPTER SET  
 CB56000 ADAPTER FOR EMD INJECTOR EUI  
 CB56100 VOLVO F2 PUMP INJECTOR ADAPTER SET




## CB5 0400

Adapter for Delphi A3 EUI Sleeve  
 Adapter for Delphi A3 type EUI for  
 Volvo Applications. 



## CB50600

CB5 0600 Adapter for Bosch Unit Pump  
 PLD1C100 Adapter for Bosch EUP Mercedes  
 Benz Applications 0414799008 and variants  
 (PLD1C100/440/24S140) 

# WHAT'S INCLUDED?

RUBBER FEET	4
TEST INJECTOR FOR UNIT PUMPS	1
PC CDs	1
UTS1004 TEST TUBE	1
UTS1004 PRESSURE HOSE	1
FUSE -5A-	3
FUSE -1A-	3
FUSE -2,5A-	3
FUSE -8A-	3
BIG CAM BOX PIN SET	1
BIG CAM BOX COLUMN NUT	2
BIG CAM BOX WASHER	2
BIG CAM BOX NUT	2
BIG CAM BOX PIN SET	1
BIG CAM BOX COLUMN NUT	2
BIG CAM BOX WASHER	2
BIG CAM BOX NUT	2
BIG CAM BOX 14 COLUMN NUT	2
BIG CAM BOX 28 COLUMN NUT	2
CAM BOX PISTON CRANK	1
POWER INLET CABLE	1
SOLENOID REACTION	
TIME MODULE	1
SPRING LIFT	
MEASUREMENT TOOL 66.9mm	1
SPRING LIFT	
MEASUREMENT TOOL 68.9mm	1
SPRING LIFT	
MEASUREMENT TOOL 69.9mm	1

LEARN MORE: EUI&EUP TESTING 





## About Us

Since its establishment in 1981, our company has been producing CR test equipment, HEUI test equipment, EUI injector and pump test equipment, mechanical test equipment and devices that can diagnose faults with close to one hundred percent accuracy, and has a dealer network that organizes its sales to the whole world.

Started the production of 9 types of turbochargers, which are modules of diesel vehicles and appeal to 68 different model vehicles with 1.3, 1.4, 1.5 and 1.6 liters.



## Technical Support

To get help from our technical support, simply contact us today. The expert technical team responds quickly to all service requests registered on the web page.



## Reach To Dealer

Maktest is located in Izmir, Turkey. We work with our authorized dealers to provide fast and perfect service in our sales, installation and after-sales services to the whole world. You can contact us via our website to learn about Maktest dealer near you.



### Universal Solutions

All makes injector and pump testing



### Maktest Warranty

Defect and malfunction coverage



### Always Up-to-date


Continuously develops software for better test results

**VISIT TODAY**

[maktest.com](http://maktest.com)

**ASK FOR MORE**

[sales@maktest.com.tr](mailto:sales@maktest.com.tr)

 / [instagram / maktestcom](https://www.instagram.com/maktestcom)

 / [Youtube / Maktest Diesel Injection Test Solutions](https://www.youtube.com/channel/UC...)

